

Product: Dual Junction Isolator

Part Number: LDGL-2/4-S1



Specification				
No.	Parameter	25℃	-0~+60℃	Units
1	Frequency range	2-4		GHz
2	Insertion Loss	≤1.0dB (1-2)	1.0dB (1-2)	dB
3	Isolation	≥40dB (2-1)	≥36dB (2-1)	dB
4	VSWR	≤1.3	≤1.35	dB
5	Impedance	50		Ω
6	Forward Power	10W/CW ;10W/RV		
7	Operating Temperature Range	-0~+60℃		
8	Connecter	SMA-Male→ SMA-Female		
9	Direction	1→2 clockwise		
10	Preferred finish Colour	silver		

Mechanical Specifications	
Housing	Alloy
Connector	Gold plated brass
Contact:	copper
Rohs	compliant
Weight	0.25kg

Outline Drawing:

All Dimensions in mm

Tolerances : Unnoted tolerances are in class m of GB-T1804-2000

All Connectors: SMA-M&SMA-F

成都利德尔科技有限公司 ChengDu Leader Microwave Technology Co.,Ltd

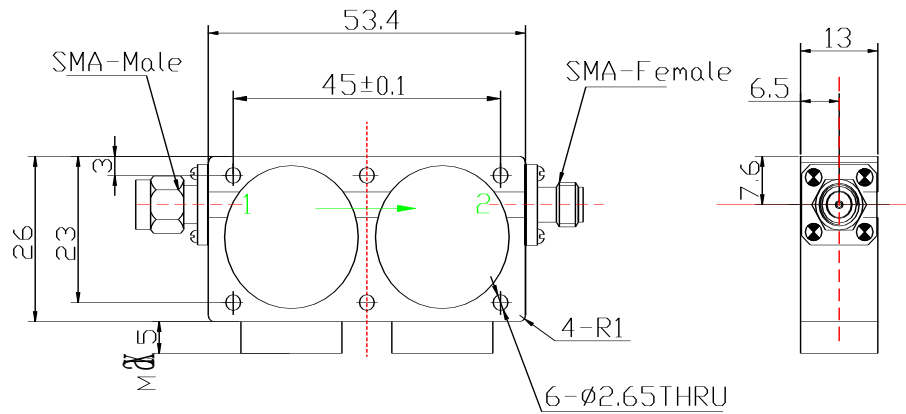
电话: 028-65199117 传真: 028-65199116

<http://www.leadermicrowave.com> sales@leader-mw.com

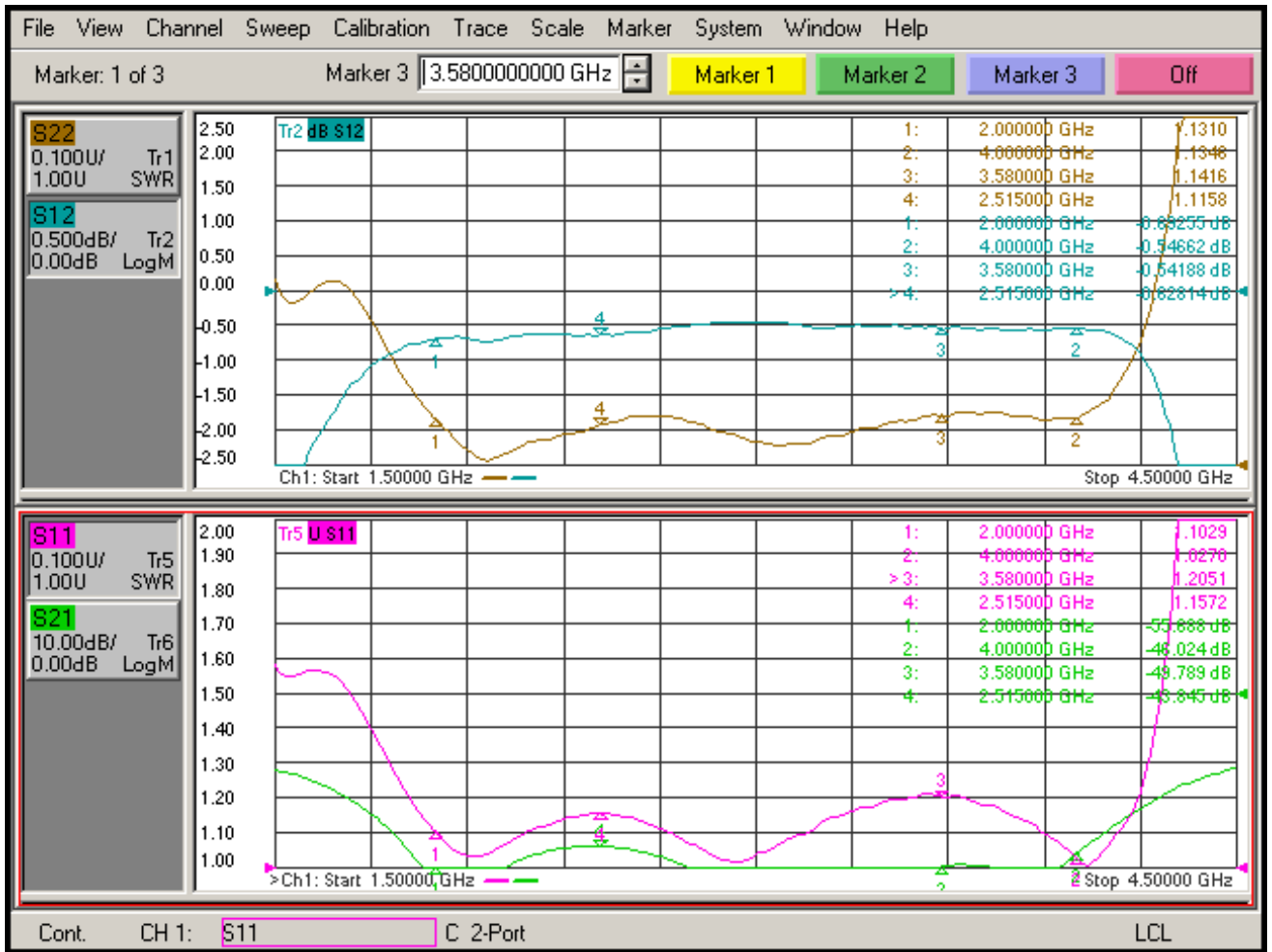
TEL: +86-28-65199117 FAX: +86-28-65199116

Add: 中国 成都市成华区华翰路 89 号 610000

No.89,Huahan Road, chenghua Zone Chengdu, Sichuan China Zip Code:610000



Test data



成都利德尔科技有限公司 ChengDu Leader Microwave Technology Co.,Ltd

电话: 028-65199117 传真: 028-65199116

<http://www.leadermicrowave.com> sales@leader-mw.com

TEL: +86-28-65199117 FAX: +86-28-65199116

Add: 中国 成都市成华区华翰路 89 号 610000

No.89,Huahan Road, chenghua Zone Chengdu, Sichuan China Zip Code:610000